



あてか"3net

Move People With  
Digital Signage

*Vanten*

# おてがるnet

Create, update and adapt your content to your audience with Otegaru net

Otegaru net is the next generation cloud based digital signage system where you can upload images at a touch of a button.

If you have WiFi and a monitor, you can use it right away!



- Use from smartphone and tablet just like commenting on SNS (social network services).
- Content distribution schedule completely automatic.
- Management easy regardless of number of monitors or where the monitors are.
- Otegaru net automatically converts movies and images regardless of format, so creating content is simple.
- Platform created with technology garnered over 10 years of experience in cloud based digital signage.

# 3net

# HOW IT WORKS

## UPDATE YOUR CONTENT IN MINUTES...

DON'T WORRY, WE WILL TAKE CARE OF YOUR INITIAL SET UP!



1



### LOGIN FROM ANYWHERE

Log in from your computer, tablet or phone from anywhere in the world where there is an internet connection.

2



### CHOOSE YOUR TEMPLATE

Edit one of our existing templates to create your content. Easily change the layout and the text.

3



### CREATE YOUR PLAYLIST

Drag and drop the content into a playlist that you would like to display on your screen(s).

4

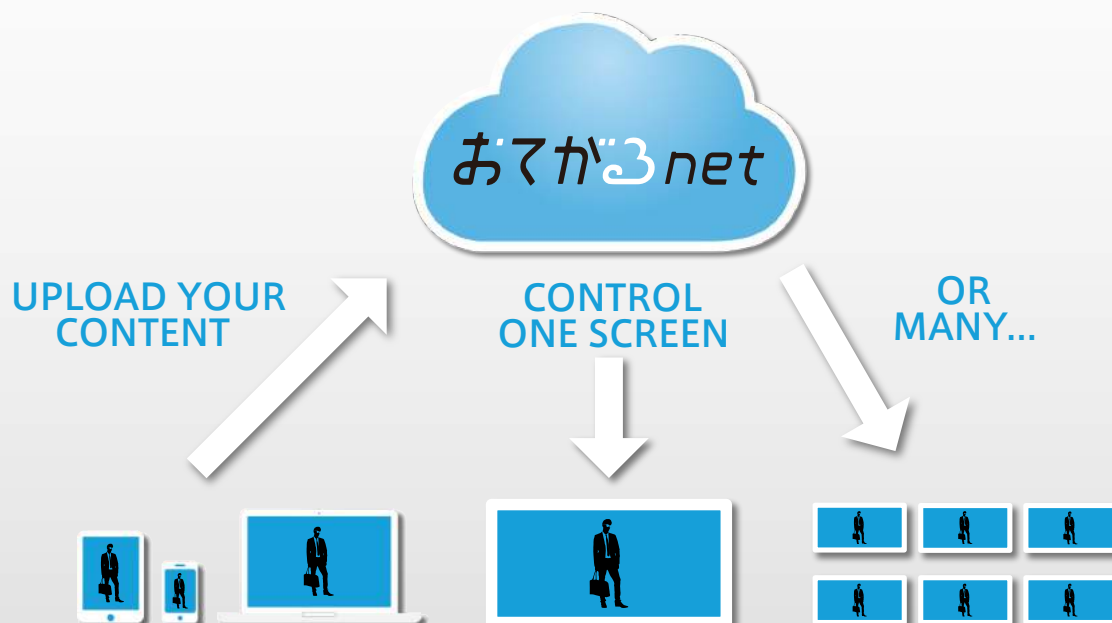


### UPLOAD YOUR PLAYLIST

Check how your content will be displayed and automatically upload your playlist to your screen(s).

# CONTROL YOUR CONTENT FROM ANYWHERE

Your selected content which can be movies, images or text, will be uploaded to Otegaru net and is automatically shown on the screen in your store or office through the Otegaru net eKanban player by wifi.



# SPECIFICATIONS

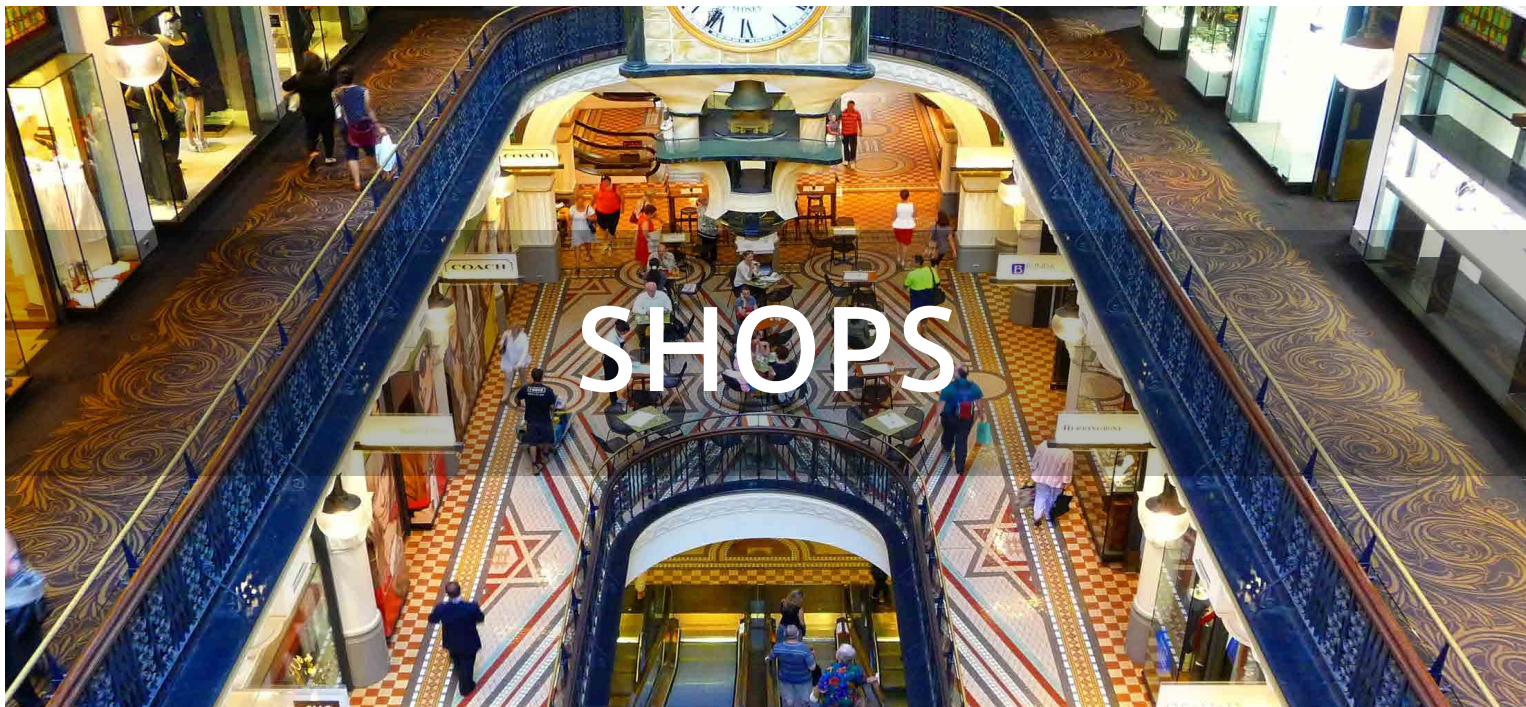
|                  |                               |
|------------------|-------------------------------|
| Model            | OTGR-550                      |
| Operating System | Android                       |
| CPU              | Quad Core                     |
| Memory           | 2GB                           |
| Internal Storage | 16GB                          |
| Network          | WiFi, Ethernet                |
| Video Supported  | Most common formats           |
| Resolution       | 1080p video, 4K x 2K graphics |
| Video Output     | Std HDMI (Type A female)      |
| Dimension        | 105x 105x 15mm                |
| Net Weight       | 140g                          |



# おてがし net

## EXAMPLES OF USE

- SHOPS
- CORPORATE
- HOTELS & RESTAURANTS



## Storefront

- Entice visitors to come in your store by displaying your weekly promotions.
- Make your own advertising and guide your visitors to the products you want to feature.
- Let customers know about special offers as they walk by your products.
- Attract extra attention to new or top-selling items and increase sales. It will also encourage additional purchases from your visitors on their journey through your store.

## Shopping District

- Centrally manage and broadcast information on events concerning the whole shopping district.
- Use as a digital flyer in real time for one-time limited 2 hour sales specials.
- Share information on a shop with the whole district.
- Use for interactive photo contests.

## Chain Stores

- Distribute content such as campaign offers, new menus, employee wanted ads to all stores.
- Upload wanted ads with comments by staff.
- Distribute information relevant to all stores.
- Distribute information on a local store to all the stores.
- Upload upcoming events right away.



# CORPORATE

## Internal Communication

- Manage digital signage in all your factories, office cafeterias, entrance foyers in Japan and overseas centrally.
- Use as an office bulletin board.
- Use to communicate with affiliated companies.
- Share information within a branch store or office, such as employee awards.
- Distribute latest news from a certain sales office or plant to all offices at once.
- Display monthly objectives and past results.

## Reception/Waiting rooms

- Introduce latest news about the company, stream PR images.
- Display messages from the president, staff introductions.
- Show images of the your company's products and manufacturing process.
- Share pictures of your company's events, outings and charity endeavours.
- Entice visitors to apply for a career within your group by explaining the recruitment process and career perspectives.
- Enhance your branding.



# HOTELS & RESTAURANTS

## Restaurants

- Have your customers anticipate their meals while they are waiting in line by showing today's specials.
- Moving frames depicting your scrumptious culinary offerings will give familiarity to undecided passersby, enticing them to come in and eat.
- Display pictures of inside to attract customers.
- Display upcoming events or performances.

## Hotels

- Information on campaigns and promotions.
- Help people make the best of their trips by providing directions and instructions about tours and meeting-points.
- Display schedules and useful information such as weather so your guests will be able to prepare accordingly.
- Assign a double function to the displays as emergency guides to exits in case of fire or earthquakes.
- Show the next arrival of the bus to take guests to the airport.
- Display information about upcoming events or musical performances in your hotel.
- Display your core company values to emphasize your service to the guests.



# おてがる<sup>3</sup>net

We have years of experience providing systems and support for our customers as well as creating content and running our own signage advertising media. We're not here just to sell you some hardware and software. We only succeed if you succeed!

Thank you for your interest in  
OTEGARU.NET

Feel free to contact us or request a demo!



## *Vanten*

VANTEN K.K.  
156-0043  
Tokyo-to, Setagaya-ku,  
Matsubara 1-54-12

サントピア明大前3F

TEL: 03-5355-0711

FAX: 03-5355-0712

Email: [sales@vanten.com](mailto:sales@vanten.com)